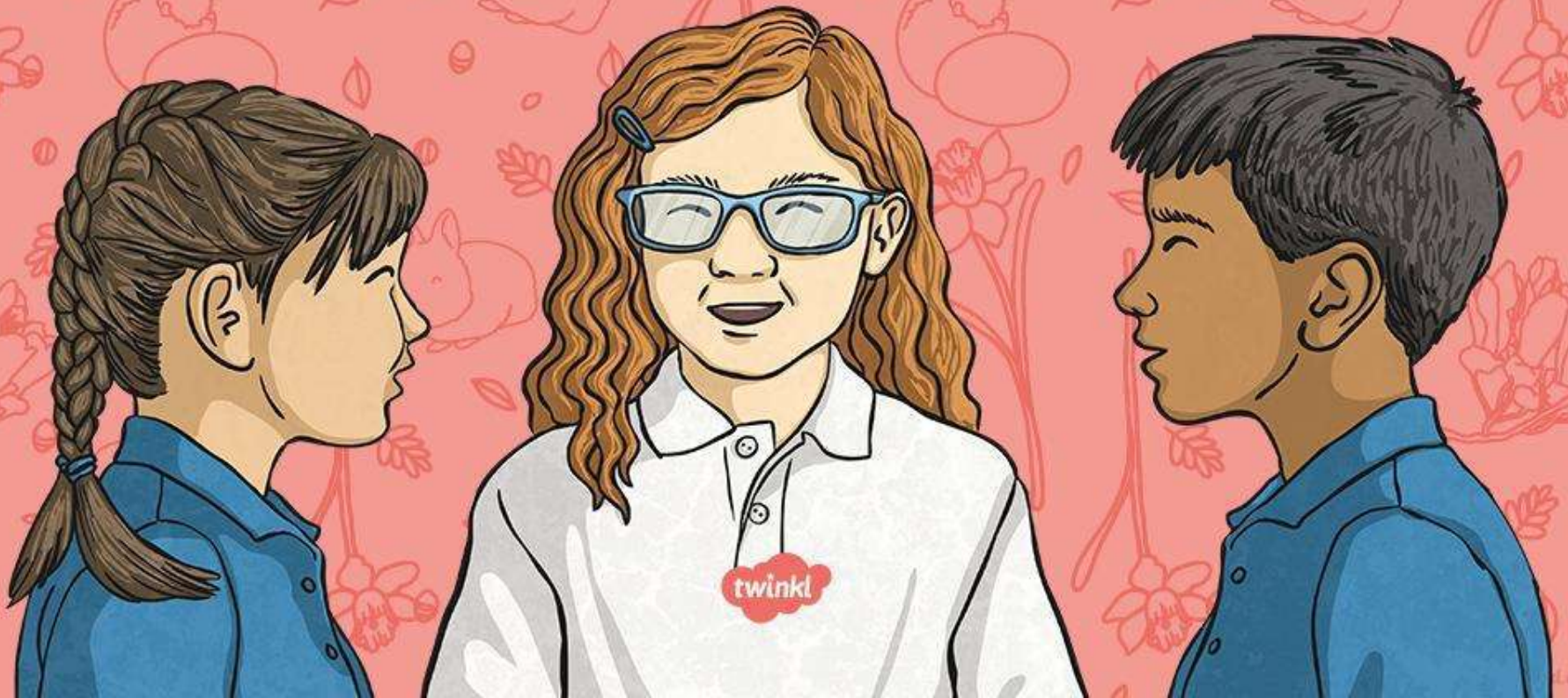


**Adding -ing, -ed, -er, -est
and -y to words ending in -e
with a consonant before it**



A **root word** is the basic form of a word before any parts are changed or added on. We have seen how root words can be changed by adding different **suffixes** (endings)...

copy

copier

marry

marrying

baby

babies

happy

happiest

cry

cries

Have a look at the root words that end in -e with a consonant before it.

Friends are nice to each other.

When my dad cleans his motorbike,
he rubs it to get it to shine.

The ghost train makes my sister
scream, but it doesn't scare me!

At the weekends, we put on our
walking boots and go for a long hike.



We can change words by removing the -e before adding the suffixes -ed, -ing, -er, -est, -y. Look...to change the root word **hike**...

hike

=

hik

=

hiked

Remove the -e before adding

ed



We can change words by removing the -e before adding the suffixes -ed, -ing, -er, -est, -y. Look...to change the root word **hike**...

hike

=

hik

=

hiking

Remove the -e before adding

ing



We can change words by removing the -e before adding the suffixes -ed, -ing, -er, -est, -y. Look...to change the root word **hike**...

nice

=

nic

=

nic+er

Remove the -e before adding

er



We can change words by removing the -e before adding the suffixes -ed, -ing, -er, -est, -y. Look...to change the root word **nice**...

nice

=

nic

=

nic+est

Remove the -e before adding

est



What is the root word here?



shine

=

shining

or

shiny

Remove the -e before adding

ing

or

y



Split into two teams. Take it in turns to click on **three** cards. If you find a root word and its two matching words with the -ing, -ed, -er, -est or -y endings, score a point for your team. Whichever team has found the most tricky trios at the end of the game is the winner.

hike

shining

scaring

hiker

nice

hiked

shiny

nicest

shine

nicer

scare

scary