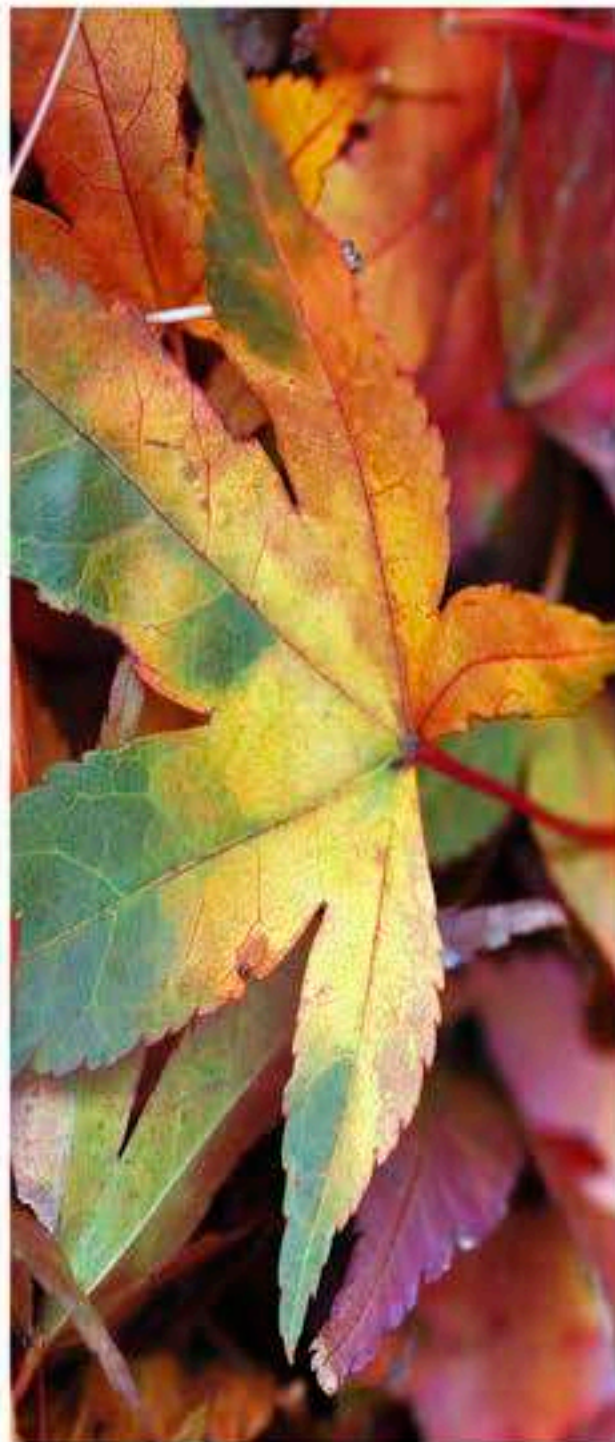
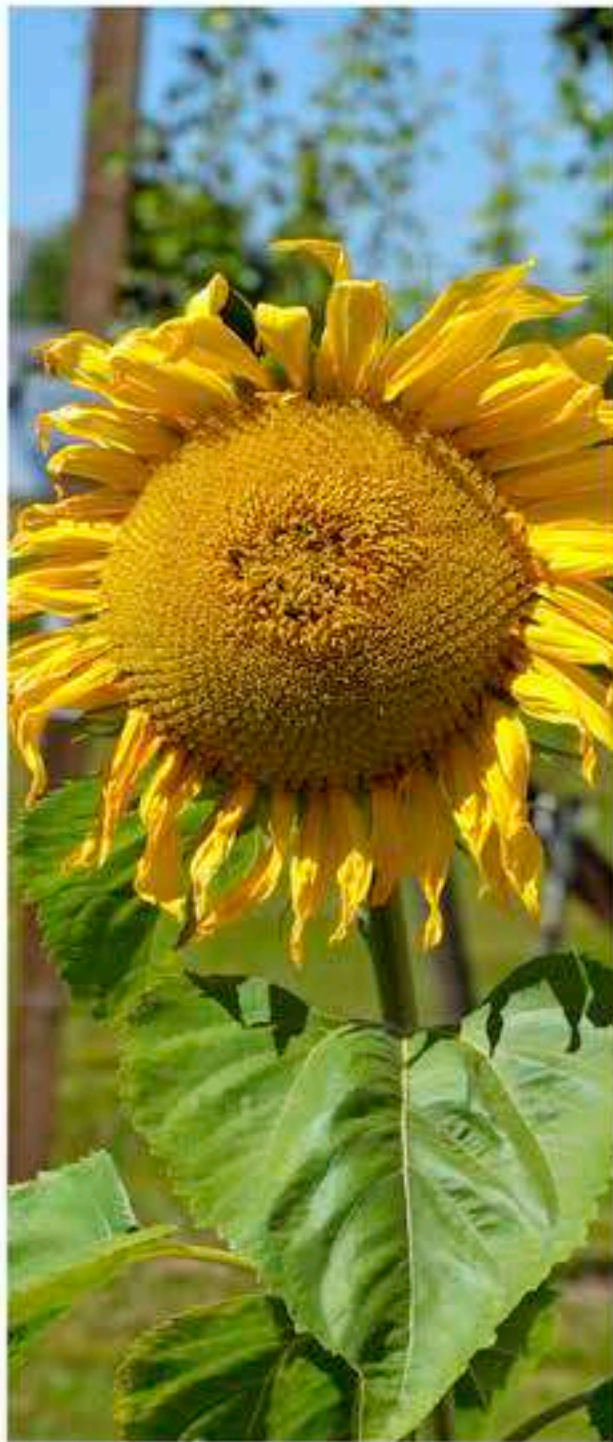


Seasonal Changes

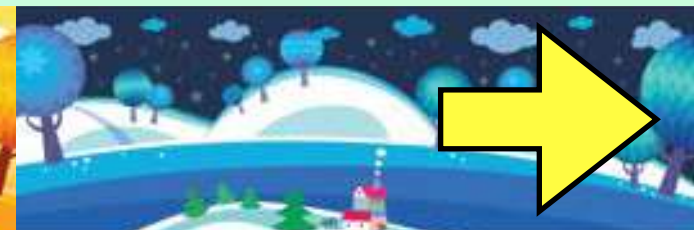
Today we will be...

Finding out how the seasons are different.





How many seasons are there in a UK year? Can you name them?



Spring

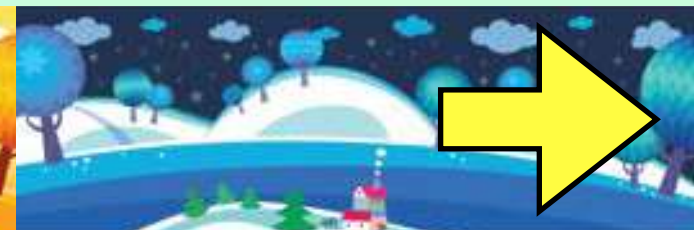
Summer

Autumn

Winter



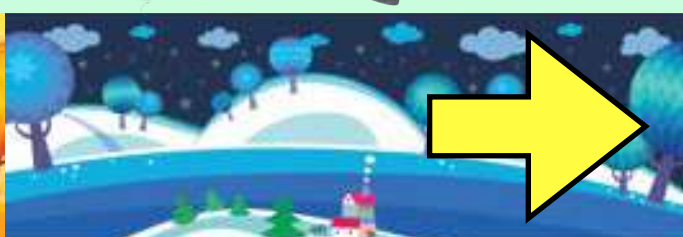
Which season is it now?





Guess the season!

What is the weather like?
What clothes is the person wearing?



It was spring!

In spring the weather changes a lot. It can be sunny one moment and raining the next. The warmer weather and all the rain helps plants to grow.





Guess the season!

What is the weather like?
What clothes are people wearing?



It was autumn!

In autumn the leaves on most trees turn brown and orange. They then fall to the ground and leave the trees bare. The wind often blows the leaves around.





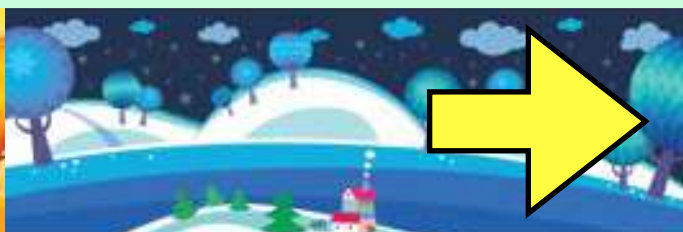
Guess the season!

What is the weather like?
What clothes are people wearing?



It was summer!

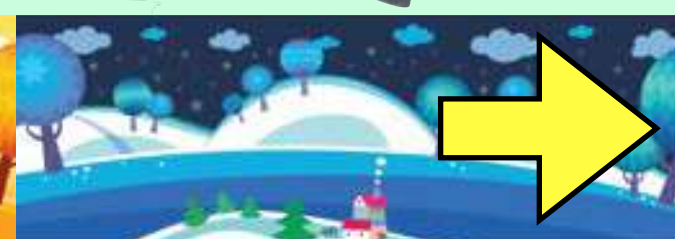
In summer there are lots of flowers in bloom. It can be very hot and dry. When this happens, humans, plants and animals need extra water to drink.





Guess the season!

What is the
weather like?
What clothes is the
person wearing?



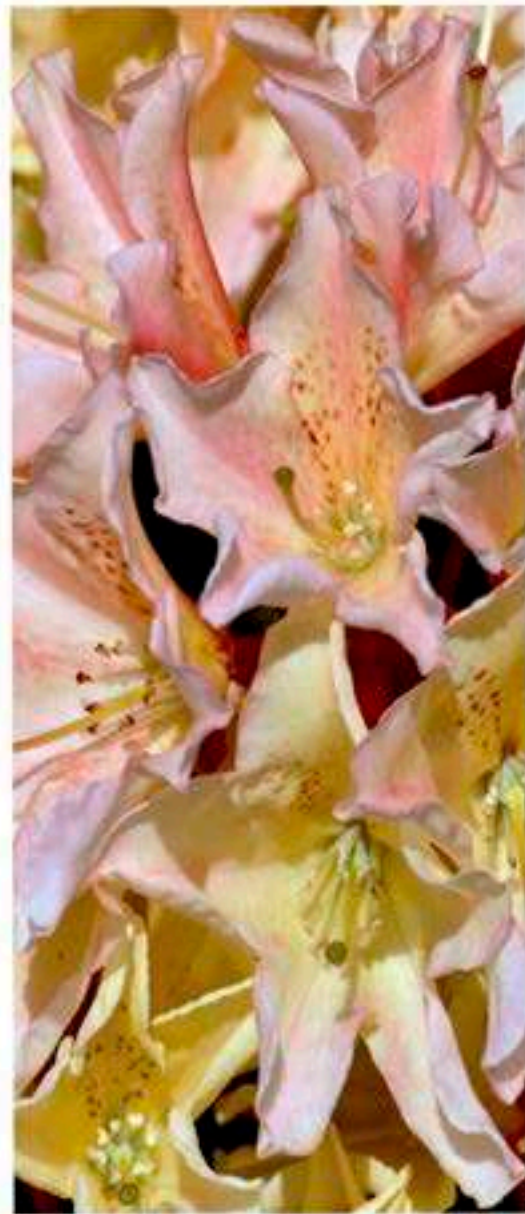
It was winter!

In winter the ground is often covered in frost. It can be so cold that lakes freeze. The ice is very slippery and people need to take extra care to stay safe.



Plenary

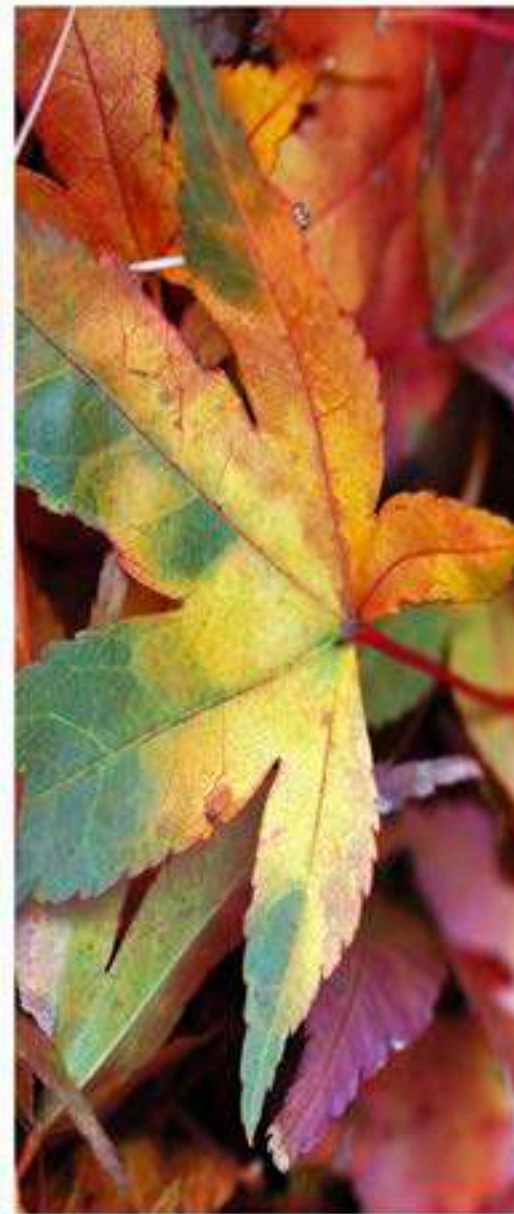
Which is your favourite season and why?



Spring



Summer



Autumn



Winter

