

Seasonal Changes

Today we will be...

Describing the different seasons.



What is the weather like today?



Think, pair,
share your
ideas.





Sometimes the weather is sunny.





Sometimes the weather is cloudy.



Sometimes the weather is rainy.



Sometimes the weather is snowy.



The weather is always changing.

How many different
types of weather can you
think of?



How many seasons are
there in the UK?

Which season is it
today?



Spring

Summer


Autumn

Winter



That's right, there are four!





March, April and May are spring months. In spring it normally rains a lot. Often it is cold even when it is sunny.

What clothes do you need to wear in spring?




In spring the weather changes a lot. It can be sunny one moment and raining the next. Sometimes it even snows.



In the spring you can often just wear jeans and a T-shirt but you need to have a jumper, a waterproof coat, an umbrella and wellington boots ready too!





June, July and August are summer months. In summer it is normally warm and sunny.

What clothes do you need to wear in summer?



In summer it is warm and sunny most of the time. It still rains sometimes.



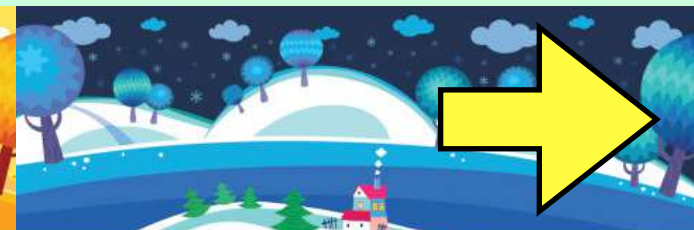
In the summer you need to have light clothing to keep you cool and a sun hat and sunglasses to protect you from the sun. You might also need an umbrella!





September, October and November are autumn months. In autumn it is normally wet and windy. Sometimes there are storms.

What clothes do you need to wear in autumn?




In autumn it is often wet and windy. It is still sunny sometimes, but the temperature is cooler than summer.



In the autumn you need to wear warm, waterproof clothing, like a coat, a jumper and trousers. Sometimes you might need a scarf and an umbrella.





December, January and February are winter months. In winter it is normally cold and wet. Occasionally it snows but most of the time it is cloudy.

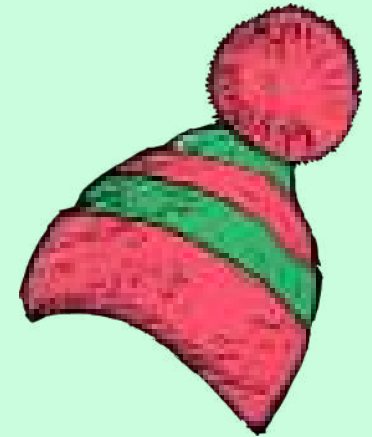
What clothes do you need to wear in winter?



In winter it is cold most of the time. Sometimes it rains but on cold days it might snow. It is often frosty in the morning.



In the winter you need to have warm clothing, like a hat, coat, scarf and gloves. When it is very cold you might need winter boots.



Plenary

Which season is it today?

Is the weather today
what you would expect for
the season?

What clothes did you wear
to school today?

